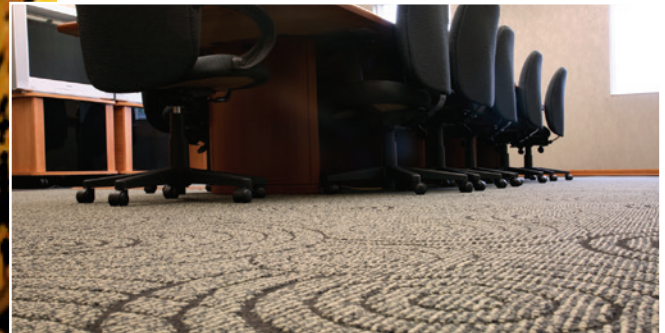


Control Foam Residue Left in Carpets from Previous Cleaning



DIRECTIONS: Shake well before using. Test fabric in inconspicuous place for color fastness before using.

Dilute 1 part Defoamer to 7 parts water (4 oz. Defoamer plus water to 1 quart) should be prepared, carried and used by your cleaning crew.

In the Vacuum Tank:

Defoamer is best used in the vacuum tank. Start with 1 oz. (30 mL) of diluted Defoamer for a 5 gallon tank. More may be added as needed. Properly used Defoamer adds dimensions to your vacuum tank to permit full use of the extraction process.

In the Cleaning Solution:

When the carpet has heavy shampoo residue, diluted Defoamer may also be added to the cleaning solution. Try 1 oz. (30 mL) per 5 gallon (18.9 L) of solution. **Note:** Defoamer in the solution tank might cause clogging of some equipment filters.

As a Spray:

When the carpet has a heavy shampoo residue, diluted Defoamer may also be sprayed on the carpet before cleaning. Mix 1 oz. (30 mL) of diluted Defoamer and dilute that further with water to 1 quart (946 mL). Spray this very sparingly to cover at least 200 square feet.

NOTE: Freezing will not affect cleaning power. Thaw, shake well and use.



Nilodor, Inc.

10966 Industrial Parkway, N.W. P.O. Box 660

Bolivar, OH 44612-0660 U.S.A.

1-800-443-4321 or (330) 874-1017 FAX (330) 874-3366

www.nilodor.com