



# T&S BRASS AND BRONZE WORKS, INC.

2 SADDLEBACK COVE / P.O. BOX 1088 / TRAVELERS REST, SC 29690

PHONE 800-476-4103

FAX 864-834-3518



REG.#A2601  
ISO #9001

Model No.

B-0182

Item No.:

Job Name:

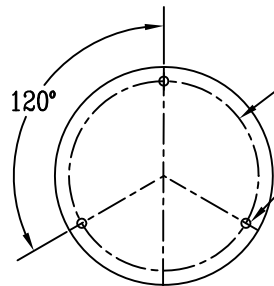
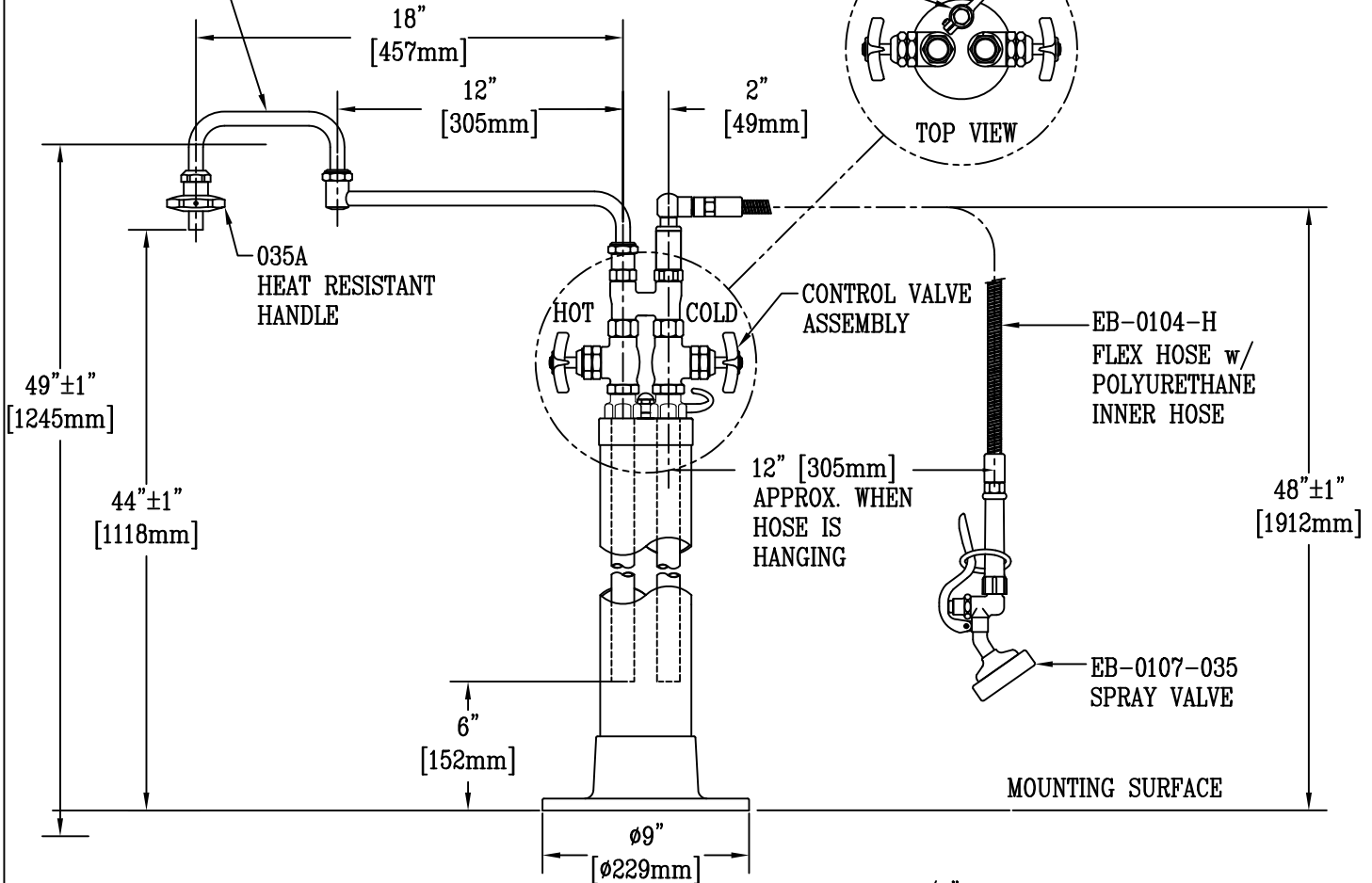
Architect/Engineer Approval:

Notes:

002848-40  
DOUBLE JOINT  
SWING NOZZLE

HOOK & BOLT  
ASSEMBLY

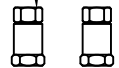
EPAct2005 NON-COMPLIANT



Ø7 1/2"  
[Ø191mm]

3 BOLT HOLES Ø 1/2" x 3"  
HEX HEAD BOLTS & EXPANSION  
SHIELDS FURNISHED

CHECK VALVES FURNISHED  
FOR 1/2" PIPE CONNECTION



**NOTE:**

1. ASSEMBLY CONNECTS TO Ø 1/2" PIPE NIPPLES ROUGHED IN FROM FLOOR ON 2" CENTERS TO A HEIGHT OF 6".
2. STANCHION IS BRASS WITH POLISHED CHROME PLATED FINISH.
3. STANDARD FLEX HOSE = 104" LONG (MODIFIED LENGTHS AVAILABLE UPON REQUEST)

Product Description:

KETTLE KADDY: (2) INDIVIDUAL WATER SUPPLIES, 18" DOUBLE JOINT SWING NOZZLE, EB-0107-035 & 104" FLEX HOSE ASM, DUAL CONTROLS

Drawn:

DHL

Checked:

GEF

Scale:

1:8

Approved:

JHB

Date:

11/17/11



# T&S BRASS AND BRONZE WORKS, INC.

2 SADDLEBACK COVE / P.O. BOX 1088 / TRAVELERS REST, SC 29690  
PHONE 800-476-4103 FAX 864-834-3518



REG.#A2601  
ISO #9001

Model No.

B-0183

Item No.:

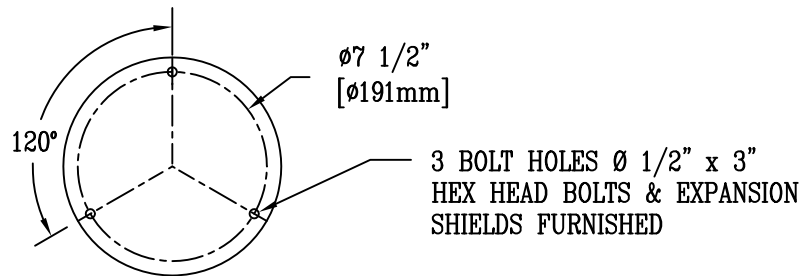
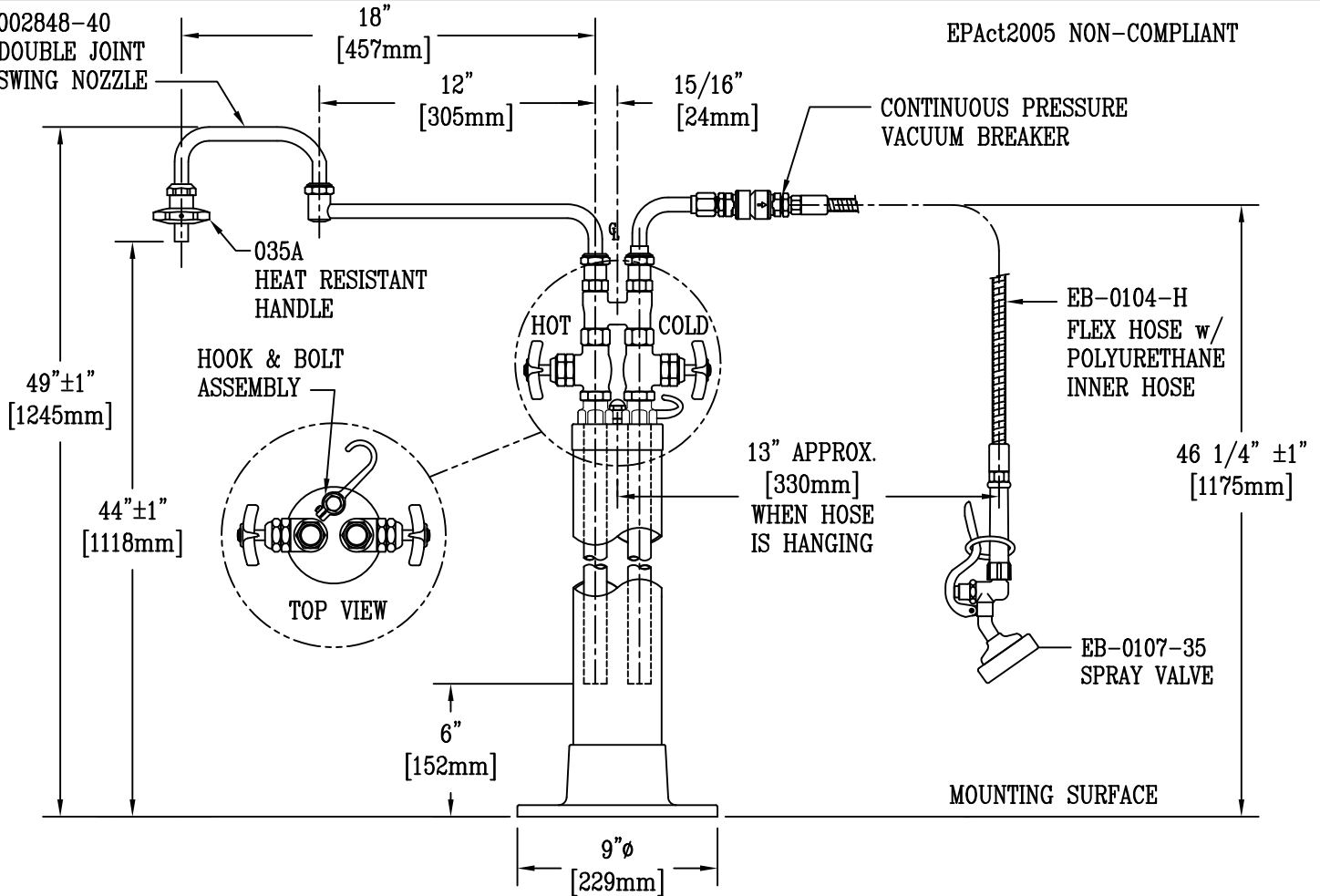
Job Name:

Architect/Engineer Approval:

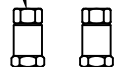
Notes:

002848-40  
DOUBLE JOINT  
SWING NOZZLE

EPAAct2005 NON-COMPLIANT



CHECK VALVES FURNISHED FOR ∅ 1/2" PIPE CONNECTION



### NOTE:

1. ASSEMBLY CONNECTS TO ∅ 1/2" PIPE NIPPLES ROUGHED IN FROM FLOOR ON 2" CENTERS TO A HEIGHT OF 6".
2. STANCHION IS BRASS WITH POLISHED CHROME PLATED FINISH.
3. STANDARD FLEX HOSE = 104" LONG (MODIFIED LENGTHS AVAILABLE UPON REQUEST)

Product Description:  
KETTLE KADDY ASSEMBLY, CONTINUOUS PRESSURE VACUUM BREAKER, EB-0107-035 SPRAY VALVE & 104" FLEX HOSE ASM, 18" DOUBLE JOINT NOZZLE & DUAL CONTROLS

Drawn:

DHL

Checked

GEF

Scale:

1 : 8

Approved

JHB

Date:

11/17/11